

BNYEL®

欧式起重机部件选用 彬野起重机械（上海）有限公司

致力于起重机技术20年\专业欧式起重机配件制造

2016年第一版
样册（一）



微信公众平台

彬野起重机械（上海）有限公司
BNYEL CRANES (SHANGHAI) CO.,LTD

地址：上海市嘉定区张店路161号
电话：+86-021-6155 9520
传真：+86-021-5995 1268
邮箱：sales@bnyel.com
网站：www.bnyel.com

邮编：201816



24 小时
服务热线 **4008 292 822**



➡ 企业简介

彬野起重机械(上海)有限公司是全球领先的起重机及物料智能搬运产品的专业制造和服务供应商，致力于起重机及物料搬运技术的发展和研究，采用新理念，开发新产品，不断追求工业进步。公司凭借丰富的经验、专业的设计，为客户提供自重轻、净空低、安全可靠、性能优良和运行高效的满足各种工况的起重机产品，使客户能够减少厂房投资，提高生产效率，减少日常维护，节省运营能源消耗，取得良好的投资回报。

➡ 我们的优势

以技术立足，以质量发展，以客户的需求为我们的最终目的。

➡ 我们的服务

- 1、为您提供优质的车轮组及相应的配套件；
- 2、为您提供车轮组安装方案及图纸；
- 3、为您提供电机的选型及参数；
- 4、为您提供充足的产品系列及库存；
- 5、为您提供科康公司研发的设计软件。

➡ 技术成果

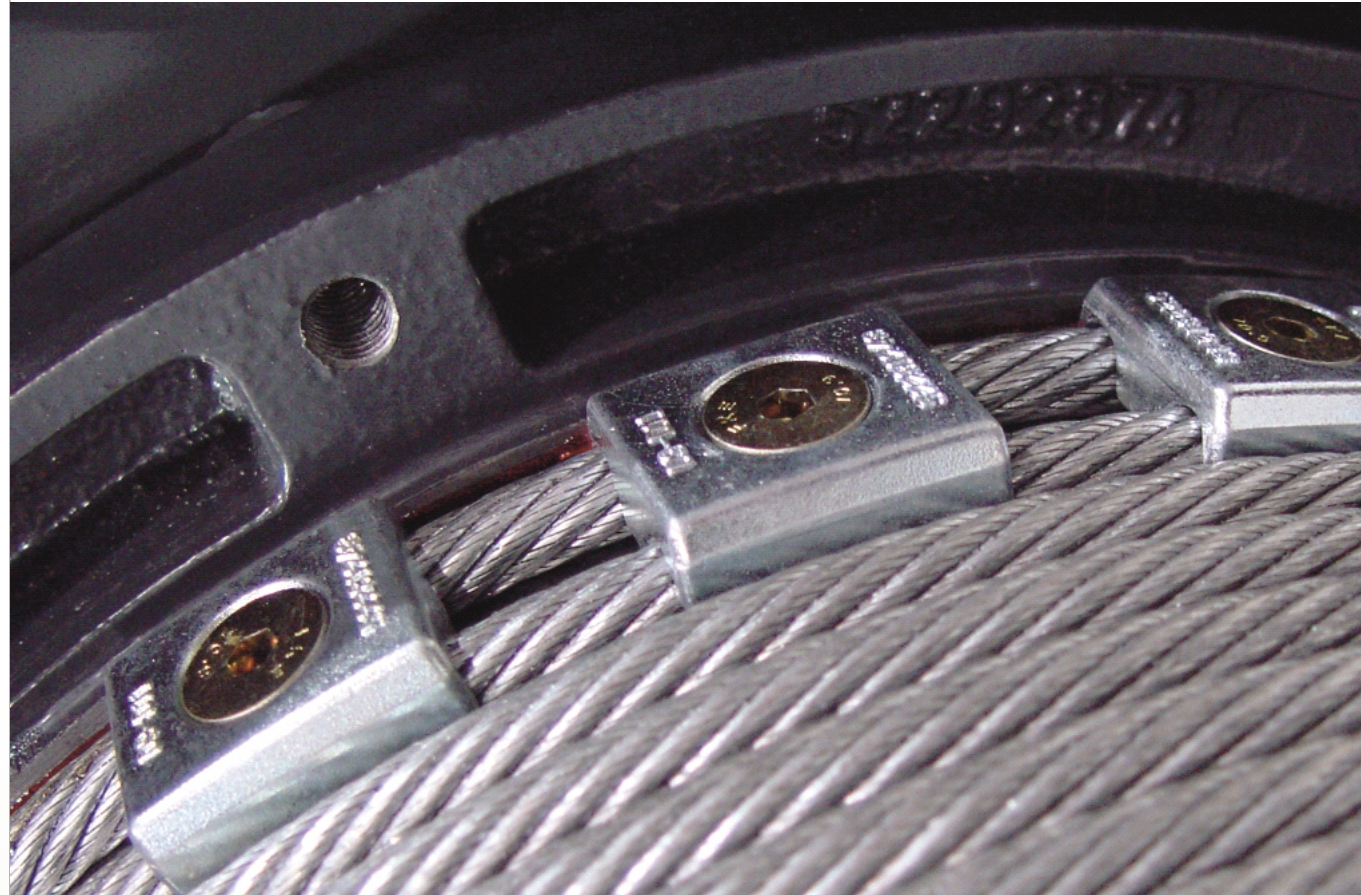
完成产品开发：

- 1、欧式葫芦3t-80t系列；
- 2、欧式端梁系列；
- 3、欧式卷扬3t-300t系列；
- 4、欧式起重机主梁系列；
- 5、DRS车轮组系列；
- 6、欧式轻型轨道系列。

软件：

- 1、【起重机轨道梁的选择】系列
- 2、【起重机工作级别选择】
- 3、【起重机主梁截面选择】
- 4、【起重机行走电机选择】
- 5、【起重机车轮轮压计算】
- 6、【起升机构计算】系列

以上软件官方网站均可免费下载



彬野出版《欧式起重机部件设计手册》

第一部分 起升机构

- 第一章 吊钩及吊钩组
- 第二章 钢丝绳
- 第三章 滑轮及滑轮组
- 第四章 卷筒组
- 第五章 联轴器
- 第六章 制动器
- 第七章 承重梁
- 第八章 起升电机
- 第九章 减速器
- 第十章 轴承座
- 第十一章 卷筒支撑及限位
- 第十二章 供电系统

第二部分 运行机构

- 第十三章 三合一行走电机
- 第十四章 车轮与台车
- 第十五章 缓冲器
- 第十六章 端梁

第三部分 旋转机构

- 第十七章 旋转机构

第四部分 金属结构

- 第十八章 单梁起重机
- 第十九章 双梁起重机
- 第二十章 门式起重机
- 第二十一章 旋臂起重机
- 第二十二章 轻型起重机
- 第二十三章 吊车梁
- 第二十四章 计算实例

即将出版

► 欧式单梁起重机端梁及三合一电机选型

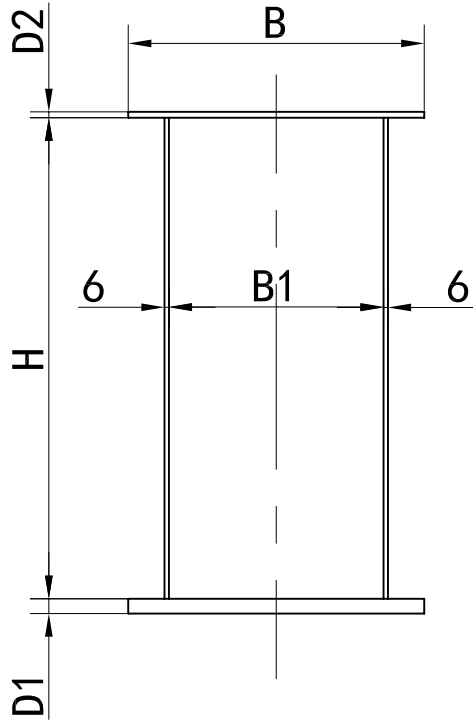
起重机型号	欧式端梁（0-32m/min）				
	GES马达型号	功率(kW)	FA马达型号	功率(kW)	端梁型号
LD1t-13.5m	GES3-24.89	0.3*2	FA27-12.35	0.25*2	EC09-22
LD1t-16.5m	GES3-24.89	0.3*2	FA27-12.35	0.25*2	EC09-27
LD1t-22.5m	GES3-30.47	0.3*2	FA27-16.28	0.37*2	EC11-31
LD1t-25.5m	GES3-41.92	0.3*2	FA27-20.15	0.55*2	EC16-31
LD1t-28.5m	GES3-41.92	0.3*2	FA27-20.15	0.55*2	EC16-38
LD2t-13.5m	GES3-24.89	0.3*2	FA27-12.35	0.25*2	EC09-22
LD2t-16.5m	GES3-30.47	0.3*2	FA27-16.28	0.37*2	EC11-27
LD2t-22.5m	GES3-30.47	0.3*2	FA27-16.28	0.37*2	EC11-31
LD2t-25.5m	GES3-41.92	0.3*2	FA27-20.15	0.55*2	EC16-31
LD2t-28.5m	GES3-41.92	0.3*2	FA27-20.15	0.55*2	EC16-38
LD3t-10.5m	GES3-24.89	0.3*2	FA27-12.35	0.37*2	EC09-22
LD3t-13.5m	GES3-30.47	0.3*2	FA27-16.28	0.37*2	EC11-22
LD3t-16.5m	GES3-30.47	0.3*2	FA27-16.28	0.37*2	EC11-27
LD3t-22.5m	GES3-41.92	0.38*2	FA27-20.15	0.55*2	EC16-31
LD3t-25.5m	GES3-41.92	0.65*2	FA27-20.15	0.55*2	EC16-31
LD3t-28.5m	GES3-41.92	0.65*2	FA27-20.15	0.55*2	EC16-38
LD5t-13.5m	GES3-30.47	0.3*2	FA27-16.28	0.37*2	EC11-22
LD5t-16.5m	GES3-41.92	0.38*2	FA27-16.28	0.37*2	EC11-27
LD5t-22.5m	GES3-41.92	0.45*2	FA27-20.15	0.55*2	EC16-31
LD5t-25.5m	GES3-41.92	0.65*2	FA27-20.15	0.55*2	EC16-31
LD5t-28.5m	GES3-41.92	0.65*2	FA37-28.05	0.55*2	EC20-38
LD8t-13.5m	GES3-41.92	0.45*2	FA27-20.15	0.55*2	EC16-22
LD8t-16.5m	GES3-41.92	0.65*2	FA27-20.15	0.55*2	EC16-27
LD8t-22.5m	GES3-41.92	0.65*2	FA37-28.09	0.55*2	EC20-31
LD8t-25.5m	GES4-107.8	0.65*2	FA47-34.29	0.75*2	EC25-31
LD8t-28.5m	GES4-107.8	0.65*2	FA47-34.29	0.75*2	EC25-38
LD10t-16.5m	GES3-41.92	0.48*2	FA37-28.09	0.55*2	EC20-27
LD10t-19.5m	GES3-41.92	0.48*2	FA47-34.29	0.75*2	EC25-31
LD10t-25.5m	GES4-107.8	0.65*2	FA47-34.29	0.75*2	EC25-31
LD10t-28.5m	GES4-107.8	1.1*2	FA57-35.79	1.1*2	EC25-38

► 欧式双梁起重机端梁及三合一电机选型

起重机型号	欧式端梁（0-32m/min）				
	GES马达型号	功率(kW)	FA马达型号	功率(kW)	端梁型号
LH5t-10.5m	GES3-41.9	0.38*2	FA37-22.27	0.55*2	EC16-31
LH5t-13.5m	GES3-41.9	0.45*2	FA37-22.27	0.55*2	EC16-31
LH5t-16.5m	GES3-41.9	0.65*2	FA37-22.27	0.55*2	EC16-31
LH5t-19.5m	GES3-41.9	0.65*2	FA47-26.70	0.75*2	EC20-31
LH5t-22.5m	GES4-89	0.65*2	FA47-26.70	0.75*2	EC20-38
LH5t-25.5m	GES4-89	0.65*2	FA47-26.70	0.75*2	EC20-38
LH5t-28.5m	GES4-72.8	1.1*2	FA47-26.70	1.1*2	EC20-38
LH8t-10.5m	GES3-41.9	0.45*2	FA37-22.27	0.55*2	EC16-31
LH8t-13.5m	GES3-41.9	0.48*2	FA47-26.70	0.75*2	EC20-31
LH8t-16.5m	GES4-89	0.65*2	FA47-26.70	0.75*2	EC20-31
LH8t-19.5m	GES4-89	0.65*2	FA47-26.70	0.75*2	EC20-31
LH8t-22.5m	GES4-60.1	1.1*2	FA47-26.70	0.75*2	EC20-38
LH8t-25.5m	GES4-60.1	1.1*2	FA47-26.70	0.75*2	EC20-38
LH8t-28.5m	GES4-72.8	1.1*2	FA57-35.07	1.1*2	EC25-38
LH10t-10.5m	GES3-41.9	0.48*2	FA47-26.70	0.75*2	EC20-31
LH10t-13.5m	GES3-41.9	0.48*2	FA47-26.70	0.75*2	EC20-31
LH10t-16.5m	GES4-89	0.65*2	FA47-26.70	0.75*2	EC20-31
LH10t-19.5m	GES4-60.1	1.1*2	FA47-26.70	1.1*2	EC20-31
LH10t-22.5m	GES4-60.1	1.1*2	FA47-26.70	1.1*2	EC20-38
LH10t-25.5m	GES4-72.8	1.1*2	FA57-35.07	1.1*2	EC25-38
LH10t-28.5m	GES4-72.8	1.1*2	FA57-35.07	1.1*2	EC25-38
LH16t-10.5m	GES4-89	0.65*2	FA47-26.70	0.75*2	EC20-31
LH16t-13.5m	GES4-72.8	1.1*2	FA57-35.07	1.1*2	EC25-38
LH16t-16.5m	GES4-72.8	1.1*2	FA57-35.07	1.1*2	EC25-38
LH16t-19.5m	GES4-72.8	1.1*2	FA57-35.07	1.1*2	EC25-38
LH16t-22.5m	GES4-72.8	1.1*2	FA57-35.07	1.1*2	EC25-38
LH16t-25.5m	GES4-72.8	1.1*2	FA57-35.07	1.1*2	EC25-38
LH16t-28.5m	GES4-72.8	1.1*2	FA57-35.07	1.1*2	EC25-38
LH20t-10.5m	GES4-72.8	1.1*2	FA57-35.07	1.1*2	EC25-38
LH20t-13.5m	GES4-72.8	1.1*2	FA57-35.07	1.1*2	EC25-38
LH20t-16.5m	GES4-72.8	1.1*2	FA57-35.07	1.1*2	EC25-38
LH20t-19.5m	GES4-72.8	1.1*2	FA57-35.07	1.1*2	EC25-38
LH20t-22.5m	GES4-72.8	1.1*2	FA57-35.07	1.1*2	EC25-38
LH20t-25.5m	GES4-60.1	1.1*2	FA47-26.70	1.1*2	EC20B-14
LH20t-28.5m	GES4-89	1.1*4	FA47-26.70	0.75*4	EC20B-14
LH25t-10.5m	GES4-72.8	1.1*2	FA57-35.07	1.1*2	EC25-31
LH25t-13.5m	GES4-72.8	1.1*2	FA57-35.07	1.1*2	EC25-31
LH25t-16.5m	GES4-89	0.65*4	FA47-26.70	0.75*4	EC20B-14
LH25t-19.5m	GES4-89	0.65*4	FA47-26.70	0.75*4	EC20B-14
LH25t-22.5m	GES4-89	0.65*4	FA47-26.70	0.75*4	EC20B-14
LH25t-25.5m	GES4-89	1.1*4	FA47-26.70	1.1*4	EC20B-14
LH25t-28.5m	GES4-89	1.1*4	FA47-26.70	1.1*4	EC20B-14
LH32t-10.5m	GES4-89	0.65*4	FA47-26.70	0.75*4	EC20B-14
LH32t-13.5m	GES4-89	0.65*4	FA47-26.70	0.75*4	EC20B-14
LH32t-16.5m	GES4-72.8	1.1*4	FA57-35.07	1.1*4	EC25B-14
LH32t-19.5m	GES4-72.8	1.1*4	FA57-35.07	1.1*4	EC25B-14
LH32t-22.5m	GES4-72.8	1.1*4	FA57-35.07	1.1*4	EC25B-14
LH32t-25.5m	GES4-72.8	1.1*4	FA57-35.07	1.1*4	EC25B-14
LH32t-28.5m	GES4-72.8	1.1*4	FA57-35.07	1.1*4	EC25B-14
LH50t-16.5m	GES5-114.3	1.5*4	FA67-32.27	1.5*4	EC25B-16
LH50t-19.5m	GES5-114.3	1.5*4	FA67-32.27	1.5*4	EC25B-16
LH50t-22.5m	GES4-89	1.5*4	FA67-32.27	1.5*4	EC32B-16
LH50t-25.5m	GES4-89	1.5*4	FA67-32.27	1.5*4	EC32B-16
LH50t-28.5m	GES4-89	1.5*4	FA67-32.27	1.5*4	EC32B-16

► 电动葫芦单梁桥式起重机箱型主梁截面

起重量 (t)	跨度 (m)	主梁尺寸 (mm)					自重 (kg)
		H	B	B1	D1	D2	
1	7.5	350	300	190	10	6	610
	10.5	350	300	190	10	6	850
	13.5	400	300	190	10	6	1,150
	16.5	500	300	190	10	6	1,580
	19.5	500	300	190	10	6	1,860
	22.5	500	400	290	10	8	2,620
	25.5	600	400	290	10	8	3,250
2	28.5	600	400	290	10	8	3,620
	7.5	350	300	190	12	6	650
	10.5	350	300	190	12	6	900
	13.5	500	300	190	12	6	1,360
	16.5	600	300	190	12	6	1,830
	19.5	600	400	290	12	8	2,620
	22.5	700	400	290	12	8	3,260
3	25.5	750	400	290	12	8	3,830
	28.5	750	500	390	16	8	5,280
	7.5	350	300	190	16	6	720
	10.5	450	300	190	16	6	1,110
	13.5	550	300	190	16	6	1,560
	16.5	650	300	190	16	6	2,080
	19.5	700	400	290	16	8	3,080
5	22.5	750	400	290	16	8	3,670
	25.5	850	400	290	16	8	4,430
	28.5	850	500	390	16	8	5,600
	7.5	400	300	190	20	6	840
	10.5	500	300	190	20	6	1,270
	13.5	600	300	190	20	6	1,760
	16.5	650	400	290	20	8	2,730
8	19.5	750	400	290	20	8	3,440
	22.5	850	400	290	20	8	4,200
	25.5	950	400	290	20	8	5,040
	28.5	950	500	390	20	8	6,380
	7.5	400	400	290	25	6	1,130
	10.5	600	400	290	25	6	1,800
	13.5	700	400	290	25	6	2,450
	16.5	800	400	290	25	8	3,270
	19.5	900	400	290	25	8	4,070
	22.5	1000	400	290	25	8	4,930
	25.5	1100	400	290	25	8	5,860
	28.5	1100	500	390	25	10	7,660



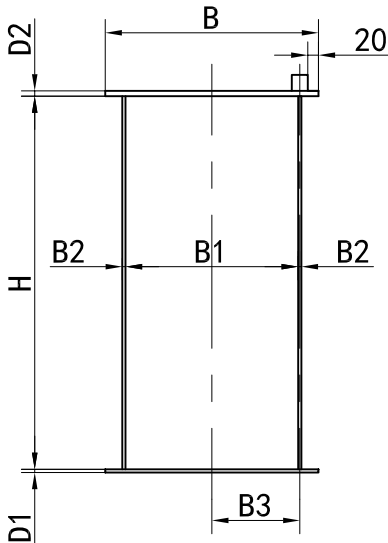
说明：

- 1、工作制为A5；
- 2、下扰度按1/800计算；
- 3、材料均为Q235B。

起重量 (t)	跨度 (m)	主梁尺寸 (mm)					自重 (kg)
		H	B	B1	D1	D2	
10	7.5	500	400	290	30	6	1,340
	10.5	600	400	290	30	6	1,970
	13.5	700	400	290	30	8	2,750
	16.5	850	400	290	30	8	3,630
	19.5	950	400	290	30	8	4,490
	22.5	1100	400	290	30	8	5,540
	25.5	1100	500	390	30	10	7,370
	28.5	1100	600	490	30	10	9,280

► 电动葫芦双梁桥式起重机箱型主梁截面

起重量 (t)	跨度 (m)	主梁尺寸 (mm)							轨道 型号	自重 (kg/件)
		H	B	B1	B2	B3	D1	D2		
5	7.5	400	300	224	6	115	6	6	30*30	640
	10.5	500	300	224	6	115	6	6	30*30	1,000
	13.5	600	300	224	6	115	6	6	30*30	1,420
	16.5	700	300	224	6	115	6	6	30*30	1,910
	19.5	700	400	324	6	165	8	8	30*30	2,750
	22.5	750	400	324	6	165	8	8	30*30	3,290
	25.5	850	400	324	6	165	8	8	30*30	4,000
	28.5	900	400	324	6	165	8	8	30*30	4,620
8	7.5	500	300	214	6	110	6	6	40*40	760
	10.5	600	300	214	6	110	6	6	40*40	1,170
	13.5	700	300	214	6	110	6	6	40*40	1,640
	16.5	750	400	314	6	160	8	8	40*40	2,510
	19.5	850	400	314	6	160	8	8	40*40	3,180
	22.5	950	400	314	6	160	8	8	40*40	3,910
	25.5	1050	400	314	6	160	8	8	40*40	4,700
	28.5	1050	500	414	6	210	8	8	40*40	5,750
10	7.5	500	300	214	6	110	6	6	40*40	760
	10.5	650	300	214	6	110	6	6	40*40	1,230
	13.5	800	300	214	6	110	6	6	40*40	1,780
	16.5	800	400	314	6	160	8	8	40*40	2,600
	19.5	900	400	314	6	160	8	8	40*40	3,280
	22.5	1000	400	314	6	160	8	8	40*40	4,030
	25.5	1100	400	314	6	160	8	8	40*40	4,840
	28.5	1150	500	414	6	210	8	8	40*40	6,080
16	7.5	650	300	214	6	110	8	8	40*40	970
	10.5	700	400	314	6	160	8	8	40*40	1,570
	13.5	850	400	314	6	160	8	8	40*40	2,230
	16.5	1000	400	314	6	160	8	8	40*40	2,990
	19.5	1100	400	314	6	160	8	8	40*40	3,740
	22.5	1200	400	314	6	160	8	8	40*40	4,550
	25.5	1300	500	414	6	210	8	8	40*40	5,920
	28.5	1350	500	414	6	210	8	10	40*40	6,990
20	7.5	650	300	214	6	110	8	8	40*40	970
	10.5	750	400	314	6	160	8	8	40*40	1,630
	13.5	900	400	314	6	160	8	8	40*40	2,310
	16.5	1050	400	314	6	160	8	8	40*40	3,080
	19.5	1200	400	314	6	160	8	8	40*40	3,960
	22.5	1250	500	414	6	210	8	8	40*40	5,110
	25.5	1400	500	414	6	210	8	8	40*40	6,220
	28.5	1480	500	414	6	210	8	10	40*40	7,420

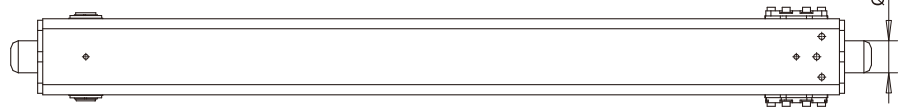


说明：

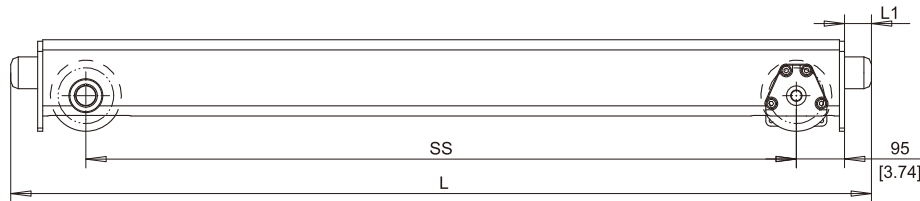
- 1、工作制为A5；
- 2、下扰度按1/800计算；
- 3、材料均为Q235B；
- 4、顶部连接时，留切口>H/3。

起重量 (t)	跨度 (m)	主梁尺寸 (mm)							轨道 型号	自重 (kg/件)
		H	B	B1	B2	B3	D1	D2		
25	7.5	650	400	294	6	150	8	8	60*60	1,210
	10.5	800	400	294	6	150	8	8	60*60	1,850
	13.5	1000	400	294	6	150	8	8	60*60	2,660
	16.5	1150	400	294	6	150	8	8	60*60	3,510
	19.5	1250	400	294	6	150	8	10	60*60	4,470
	22.5	1350	500	394	6	200	8	10	60*60	5,870
	25.5	1480	500	394	6	200	8	10	60*60	7,020
	28.5	1480	500	392	8	200	10	10	60*60	9,390
32	7.5	700	400	294	6	150	8	8	60*60	1,250
	10.5	850	400	294	6	150	8	8	60*60	1,910
	13.5	1100	400	294	6	150	8	8	60*60	2,810
	16.5	1250	400	294	6	150	8	10	60*60	3,800
	19.5	1300	500	394	6	200	8	10	60*60	4,990
	22.5	1480	500	394	6	200	8	10	60*60	6,210
	25.5	1480	500	394	6	200	10	12	60*60	7,430
	28.5	1480	600	494	6	250	12	12	60*60	9,260
50	7.5	700	400	292	8	150	12	16	60*60	1,720
	10.5	850	400	292	8	150	12	16	60*60	2,600
	13.5	1100	400	292	8	150	12	16	60*60	3,810
	16.5	1300	400	292	8	150	12	16	60*60	5,110
	19.5	1350	500	392	8	200	12	16	60*60	6,720
	22.5	1400	500	392	8	200	16	20	60*60	8,610
	25.5	1480	600	492	8	250	16	20	60*60	10,960
	28.5	1480	600	492	8	250	20	20	60*60	12,770

EC11 END CARRIAGE



* For joint plate details, refer to drawing: JOINT PLATE TYPE P.
End carriage shown without joint plate.



BUMPER DIMENSIONS		
TYPE	L1	Ø
	mm	mm
A	53	63
B	68	80
C	85	100
D	105	125

TREAD WIDTH RANGE
UU = 50mm [2"...75mm [2.95"]

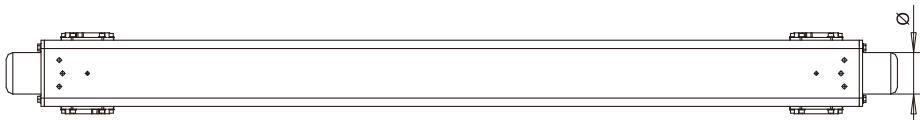
COMPATIBLE WITH GES3 DRIVE.

** The maximum wheel loads listed are only a guideline. The maximum values are based on assumption that the crane speed is 32m/min [105fpm], end carriage duty is Fem 2m and the runway rail width is 50mm [2"]. If these conditions change,

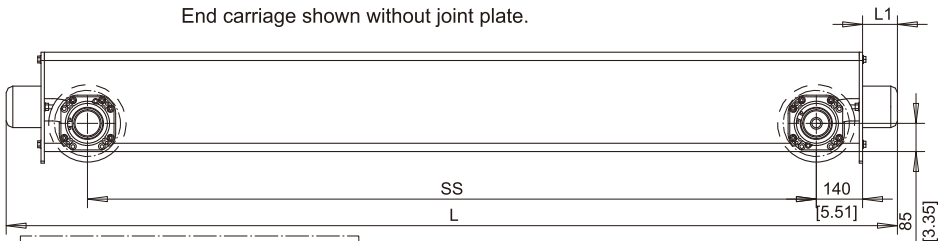
Dimensions are for reference in estimating only. Use of various modifications may affect overall dimensional outline. Where dimensions are critical, request certified drawings for construction. All dimensions are in millimeters unless otherwise noted.

EC11 END CARRIAGE							
SS mm (in)	H mm (in)	Max. dynamic whl load kN(KIP)**		Wt. kg (lb)	Chd:DAVID		P_QX.EC11 File
		Single girder	Double girder R=1200		Date	APFD:sun	
1400 (55.12)	150 [5.9]	44.0 (9.9)	-----	80 (176)	2012-08-08	QX.EC11	
1800 (70.87)	150 [5.9]	41.0(9.225)	-----	93 (205)	Z&W		
2200 (86.61)	150 [5.9]	33.0(7.425)	44.0 (9.9)	107 (236)	MATERIALS	4501 Gateway Blvd, Springfield	
2700 (106.3)	150 [5.9]	27.0(6.075)	44.0 (9.9)	124 (273)	HANDLING		
					INC.	EC11 END CARRIAGE	Issue 8/2012

EC20 END CARRIAGE



For joint plate details, refer to drawing:
TOP JOINT PLATE TYPE L
SIDE JOINT PLATE TYPE R
End carriage shown without joint plate.



TYPE	L1	Ø
	mm	mm
A	53	63
B	68	80
C	85	100
D	105	125
E	150	100
F	190	125

TREAD WIDTH RANGE
UU = 55mm [2.17"]...100mm [3.94"]

COMPATIBLE WITH GES3 OR GES4 DRIVE.

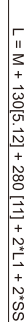
** The maximum wheel loads listed are only a guideline. The maximum values are based on assumption that the crane speed is 40 m/min [130 fpm], end carriage duty is Fem 2m and the runway rail width is 70 mm [2.75"]. If these conditions change,

Dimensions are for reference in estimating only. Use of various modifications may affect overall dimensional outline.
Where dimensions are critical, request certified drawings for construction. All dimensions are in millimeters unless otherwise noted.

EC20 END CARRIAGE									
SS		H		Max. dynamic whl load kN(KIP)**		Wt.		p. CX20 File	
mm (in)	mm (in)	Single girder	Double girder	R=1200	kg (lb)	Chd:DAVID	APFF:SON		
1800 (70.87)	300 (11.8)	120 (27.0)	-----		231(509)	2012-04-08	QX, EC20		
2200 (86.61)	300 (11.8)	120 (27.0)	120 (27.0)		260(573)	Z&W	MATERIALS		
2700 (106.3)	300 (11.8)	106 (23.8)	120 (27.0)		297(655)				
3100(122.05)	300 (11.8)	93.0(20.9)	120 (27.0)		326(719)	HANDLING	4501 Gateway Blvd, Springfield		
3800 (149.6)	300 (11.8)	76.0 (17.1)	110 (24.7)		377(831)				
						INC.	EC20 END CARRIAGE	Issue 8/2012	

[illegible]

**The maximum wheel loads listed are only a guideline. The drawings for construction. All dimensions are in millimeters unless otherwise noted.

1200 mm WHEEL BASE END CARRIAGE

Technical drawing of a mechanical part with dimensions and tolerances:

- Overall width: 20
- Overall height: 40
- Dimension 120 with tolerance $[U=2.16..3.94]$
- Dimension 55 with tolerance $[U=55..100]$
- Dimension 40 with tolerance $[1.57]$
- Dimension 120 with tolerance $[4.72]$
- Dimension 20 with tolerance $[0.79]$

BUMPER DIMENSIONS		
TYPE	L1	Ø
	mm	mm
B	68	80
C	85	100
D	105	125
E	150	100
F	190	125
H	160	160
I	200	200
M	125	125
P	240	160
S	300	200

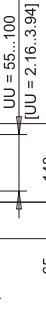
drawings for construction. All dimensions are in millimeters unless otherwise noted

Technical drawing of a mechanical part with dimensions and tolerances:

- Overall width: 20
- Overall height: 40
- Dimension 120 with tolerance $[U=2.16..3.94]$
- Dimension 55 with tolerance $[U=55..100]$
- Dimension 40 with tolerance $[1.57]$
- Dimension 120 with tolerance $[4.72]$
- Dimension 20 with tolerance $[0.79]$

[illegible]COMPATIBLE WITH GES4/GES5 DRIVE

Dimensions are for reference in estimating only. Use of various modifications may affect overall dimensional outline. Where dimensions are critical, request certified drawings for construction. All dimensions are in millimeters unless otherwise noted.



***The maximum wheel loads listed are only a guideline. The maximum values are based on assumption that the crane speed is 40 m/min (130 fpm), end carriage duty is Fm 2m and the runway rail width is 80 mm (3.15"). If these conditions change, use QuoteMaster to help select the end truck.



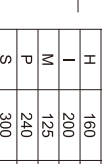
TOTAL WGT = WGT/TRK*2 + M*47 kg/m[2.63 lb/in]
TOTAL WGT IS FOR ONE-HALF SET FOR CRANE
1400 mm WHEEL BASE END CARRIAGE SHOWN
COMPATIBLE WITH GES/JESS DRIVE

EC25B END CARRIAGE

EC25B END CARRIA

BUMPER DIMENSIONS		
TYPE	L1	Ø
	mm	mm
B	68	80
C	85	100
D	105	125
E	150	100
F	190	125
H	160	160
I	200	200
M	125	125
P	240	160
S	300	200

For joint plate details, refer to drawing:
TOP JOINT PLATE TYPE K
SIDE JOINT PLATE TYPE S



Dimensions are for reference in estimating only. Use of various modifications may affect overall dimensional outline. Where dimensions are critical, request certified drawings for construction. All dimensions are in millimeters unless otherwise noted.

COMPATIBLE WITH GESA/GESE DRIVE

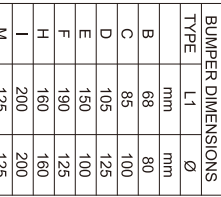
1400 mm WHEEL BASE END CARRIAGE SHOWN

TOTAL WGT IS FOR ONE HALF SET FOR CRANE

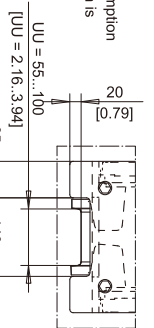
$101AL\ WGI = WGI / (HK_2 + W5 / kg/m[3.2\ lb/m])$



For joint plate details, refer to drawing:



The maximum wheel loads listed are only a guideline. The maximum values are based on assumption that the crane speed is 40 m/min (130 fpm), end carriage duty is Fm 2m and the runway rail width is 80 mm (3.15"). If these conditions change,

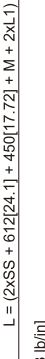


Dimensions are for reference in estimating only. Use of various modifications may affect overall dimensional outline. Where dimensions are critical, request certified drawings for construction. All dimensions are in millimeters unless otherwise noted.

Dimensions are for reference in estimating only. Use of various modifications may affect overall dimensional outline. Where dimensions are critical, request certified drawings for construction. All dimensions are in millimeters unless otherwise noted.

**The maximum wheel loads listed are only a guideline. The maximum values are based on assumption that the crane speed is 40 m/min (130 fpm), end carriage duty is Fem 2m and the runway rail width is 80 mm (3.15"). If these conditions change,

For joint plate details, refer to drawing:
 TOP JOINT PLATE TYPE K
 SIDE JOINT PLATE TYPE S
 End carriage shown without joint plate.

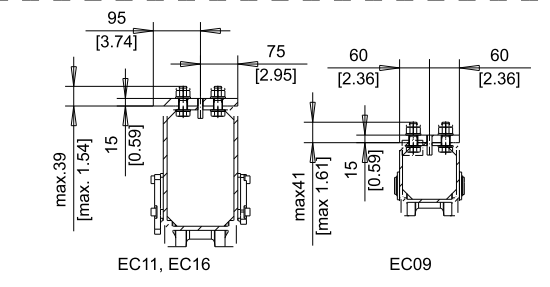


TOTAL WGT IS FOR ONE-HALF SET FOR CRANE	1600 mm WHEEL BASE END CARRIAGE SHOWN	COMPATIBLE WITH GES5 DRIVE
---	---------------------------------------	----------------------------

EC50B END CARRIAGE

B = MAXIMUM FLANGE WIDTH

min A DIMENSION mm [in]	
TRUCK	min. A
EC09	100 [4]
EC11	110 [4.3]
EC16	125 [4.9]

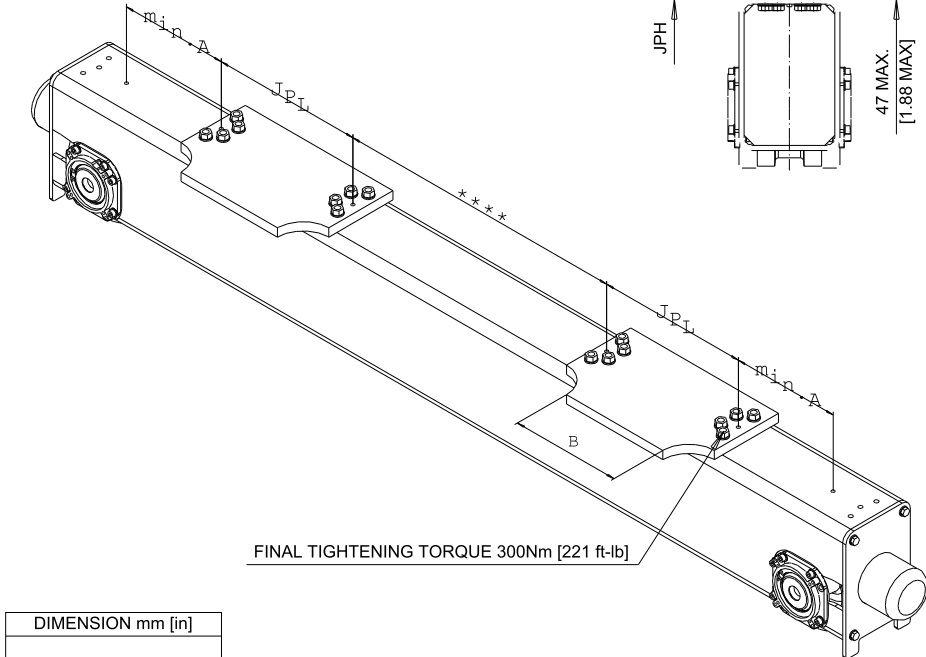


Dimensions are for reference in estimating only. Use of various modifications may affect overall dimensional outline. Where dimensions are critical, request certified drawings for construction. All dimensions are in millimeters unless otherwise noted.

Chd:DAVID	Appd:SUN	p.QX.JPT_P File
2012-08-05	QX.JPT_P	
Date	www.cocancrane.com	
Z&W		
MATERIALS	4501 Gateway Blvd, Springfield	
HANDLING	JOINT PLATE TYPE P	
INC.		

FOR EC20 END TRUCKS
DG TRUCK SHOWN

B = MAXIMUM BEAM FLANGE WIDTH



Dimensions are for reference in estimating only. Use of various modifications may affect overall dimensional outline. Where dimensions are critical, request certified drawings for construction. All dimensions are in millimeters unless otherwise noted

HANDLING		Issue
INC.	JOINT PLATE TYPE L	8/2012

FOR EC25, EC32 & EC50 END TRUCKS
DG TRUCK SHOWN

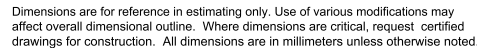


MAXIMUM DISTANCE **** between TWO CONNECTION PLATES			
	EC50	EC50	EC50
WHEELBASE	K5	K7	K9
mm [inch]	mm [inch]	mm [inch]	mm [inch]
2200 [86.61]	330 [13]	----	----
2700 [106.3]	830 [32.68]	390 [15.35]	----
3100 [122.05]	1230 [48.43]	790 [31.10]	290 [11.42]
3800 [149.6]	1930 [75.98]	1490 [58.66]	990 [38.98]
4500 [177.2]	2630 [86.22]	2190 [86.22]	1690 [66.54]
5000 [196.9]	3130 [123.2]	2690 [106]	2190 [86.22]
5500 [216.54]	3630 [142.91]	3190 [125.59]	2690 [105.91]

Issue

FOR EC20 & EC20B END TRUCKS
DG TRUCK SHOWN

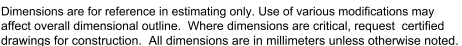
B = MAXIMUM BEAM FLANGE WIDTH



HANDLING	Issue
----------	-------

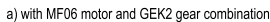
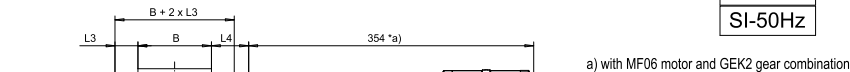
FOR EC25, EC25B, EC32, EC32B, EC50, & EC50B END TRUCKS
DG TRUCK SHOWN

B = MAXIMUM BEAM FLANGE WIDTH

INC. JOINT FLEET TITLES 8/2012


RU10 UNDER RUNNING END TRUCK

SI-60Hz
SI-50Hz



Suitable buffers		
Code	D1 [mm]	L1 [mm]
A	63	53
B	80	68
C	100	85
K	80	80
G	100	100
A, B, C: Rubber		
K, G: Polyurethane		

WHEELBASE [mm]	Max dyn corner load [kN]	L [mm]	Weight [kg]	H [mm]
1200	46	1590	161	180
1400	46	1790	171	180
1800	46	2190	191	180
2300	46	2690	217	180
2800	46	3190	275	200
3200	44	3590	299	200
3500	40	3890	318	200

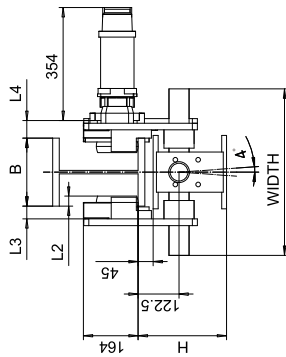
ETTAJA Design		ETTRSI Chit		Appt		Ref Drawing		UU10	
2007-05-11 Date		END CARRIAGE							 1 6 5
SLEGBOCV Owner Dept		UU10							
CC									Folder
									UU/PR
		D004973-A							Sheet
									1
		D004973-A_1		2007-05-11		UU10			

This document is the absolute property of Cocancrane. This document must not be copied without the written permission of Cocancrane.
The contents thereof must not be disclosed to a third party nor be used for any unauthorized purpose. Contravention will be prosecuted.

D004973-A			
D004973-A_1	2007-05-11	UU10	

RU13 UNDER RUNNING END TRUCK

Buffer type	L1 (mm)	\varnothing (mm)
A	53	63
B	68	80
C	85	100
D	105	125
E	150	100
F	190	125
G	100	100
K	80	80
M	125	125
A, B, C, D, rubber		
E, F, G, K, M polyurethane		



Flange width range, B (mm)	L2 (mm)	L3 (mm)	L4 (mm)	WIDTH (mm)
100 - 179	36	32	52	418
180 - 259	36	32	52	498
260 - 343	36	32	52	578
64 - 143 patented trk	20	50	70	418
144 - 223 patented trk	20	50	70	498

Wheelbase, SS (mm)	Max Dyn. Corner Load (kN)	L (mm)	Approx Wt. (kg)	H (mm)	H1 (mm)
1200	80.5	1690	300	265	220
1400	80.5	1890	314	265	220
1800	80.5	2290	343	265	220
2300	80.5	2790	378	265	220
2800	80.5	3290	453	285	240
3200	72	3690	486	285	240
3500	65	3990	511	285	240

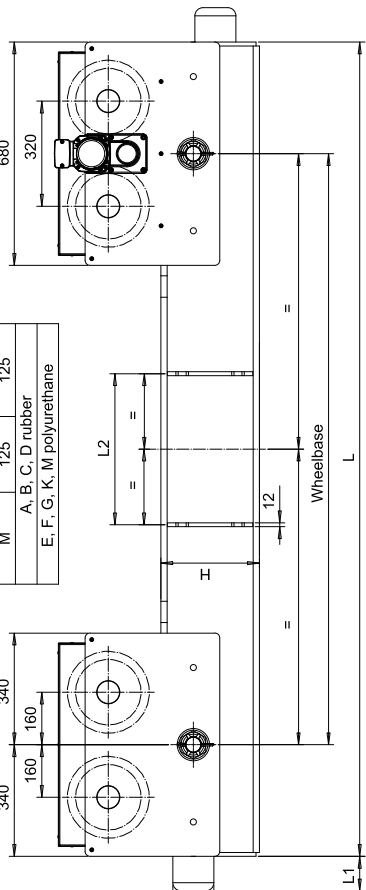
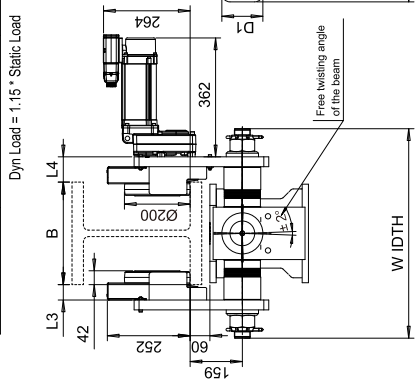
Pos	Description	Specification	Unit	Quantity
ETPRA	ETPRA	ETPRA	lot	
2008-09-11	Time	2008-09-11	lot/Quantity	
END TRUCK				
OUTLINE DRAWING				
SLEDDOCV	Doc	SLEDDOCV		1
RU13				
RU13 END TRUCK				
CC				3

This document is the absolute property of Cocacranre. This document must not be copied without the written permission of Cocacranre. The contents thereof must not be disclosed to a third party nor be used for any unauthorized purpose. Contravention will be prosecuted.

RU20 UNDER RUNNING END TRUCK

Wheelbase, SS (mm)	Max Dyn. Corner Load (kN)	L (mm)	Approx Wt. (kg)	H (mm)
1800	143.8	2480	717	300
1800	143.8	2480	717	300
2300	143.8	2980	776	300
2800	143.8	3480	834	300
3200	143.8	3880	980	360
3500	143.8	4180	1016	360
4200	143.8	4680	1087	360

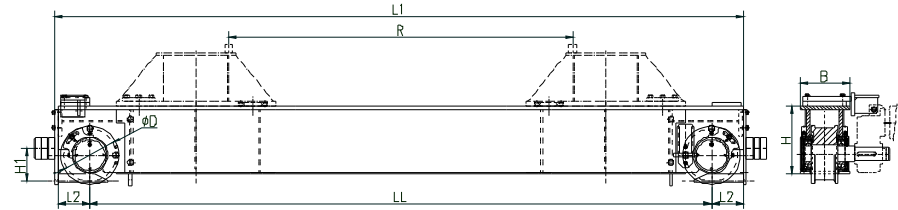
Buffer type	L1 (mm)	D1 (mm)
A	53	63
B	68	80
C	85	100
D	105	125
E	150	100
F	190	125
G	100	100
K	80	80
M	125	125
A, B, C, D rubber		
E, F, G, K, M polyurethane		



Location of stiffeners	
Joint Plate Type	L2
	(mm)
No Joint Plate	460
SD3, BD3, BD4	460
SD4, BD5	560
SD5	660

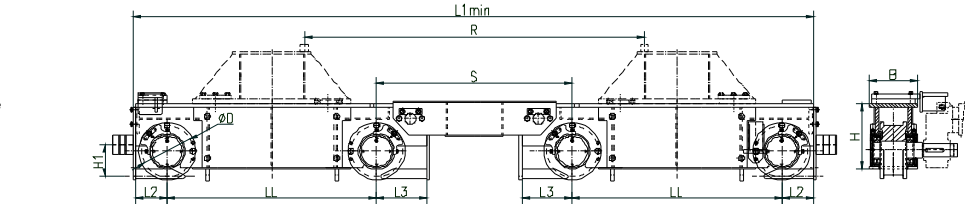
Flange width range, B (mm)	L3 (mm)	L4 (mm)	WIDTH (mm)
127 - 210	46	76	534
211 - 314	46	76	638
315 - 418	46	76	742

[illegible]

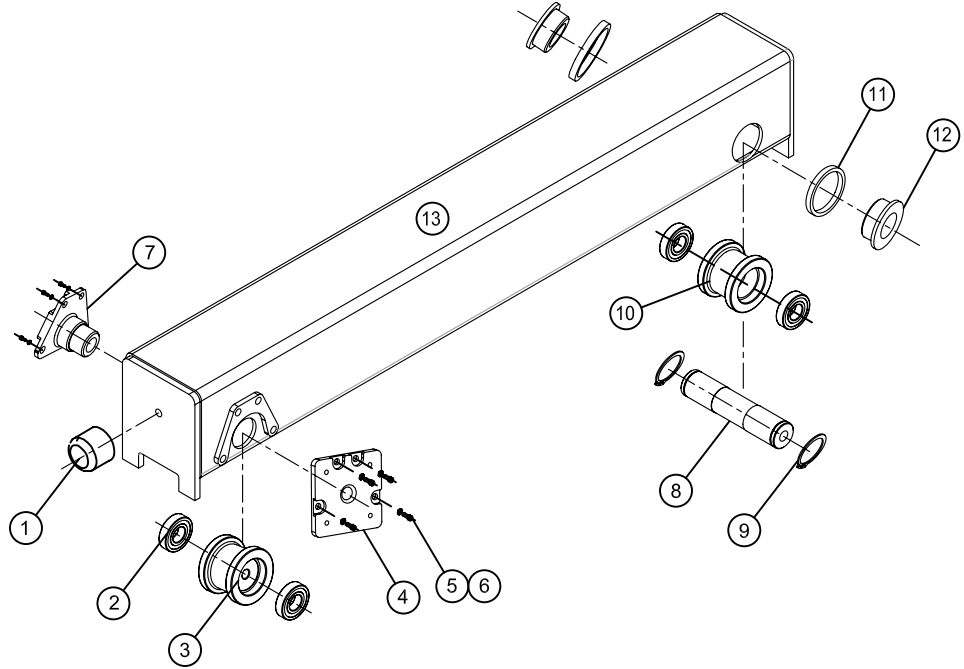


►SHR端梁

端梁 型号	D [mm]	H [mm]	B [mm]	LL [mm]	L1 [mm]	L2 [mm]	H1 [mm]
SHR25-31	250	420	310	3100	3522	195	200
SHR25-38	250	420	310	3800	4222	195	200
SHR25-45	250	450	310	4500	4922	195	200
SHR25-55	250	481	310	5500	5922	195	200
SHR32-31	320	451	310	3100	3530	195	200
SHR32-38	320	451	310	3800	4230	195	200
SHR32-45	320	481	310	4500	4930	195	200
SHR32-55	320	570	310	5500	5930	195	200
SHR40-31	400	520	330	3100	3610	235	225
SHR40-38	400	520	330	3800	4310	235	225
SHR40-45	400	570	330	4500	5010	235	225
SHR40-55	400	740	330	5500	6010	235	225
SHR50-31	500	680	380	3100	3710	285	300
SHR50-38	500	680	380	3800	4410	285	300
SHR50-45	500	740	380	4500	5110	285	300
SHR50-55	500	800	380	5500	6110	285	300
SHR63-45	630	795	480	4500	5250	355	315
SHR63-55	630	810	480	5500	6250	355	315
SHR63-65	630	960	480	6500	7250	355	315
SHR71-50	710	950	590	5000	5830	395	450
SHR71-63	710	1000	590	6300	7130	395	450
SHR71-80	710	1145	590	8000	8830	395	450
SHR80-50	800	1000	590	5000	5920	440	460
SHR80-63	800	1105	590	6300	7220	440	460
SHR80-80	800	1260	590	8000	8920	440	460

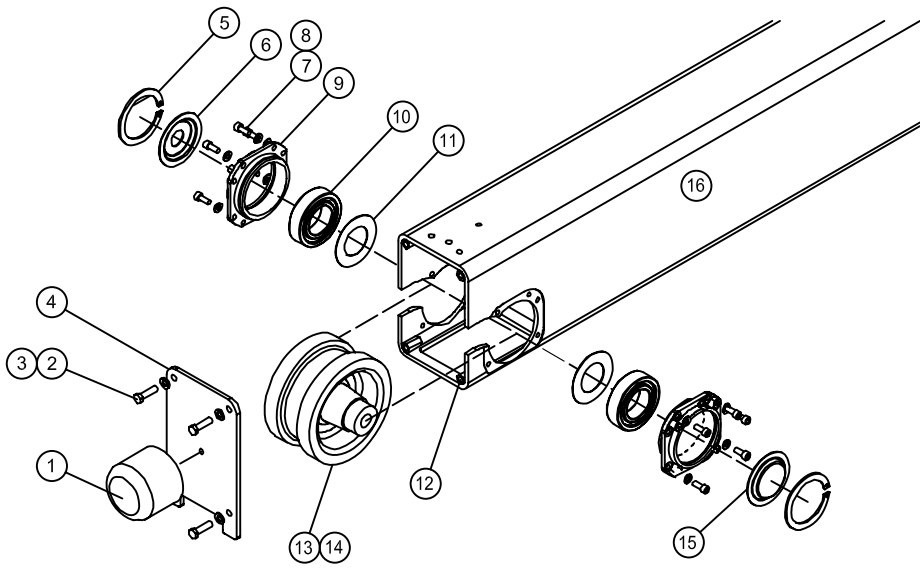


端梁 型号	D [mm]	H [mm]	B [mm]	Smin [mm]	LL [mm]	L1min [mm]	L2 [mm]	L3 [mm]	H1 [mm]
SHR25B-13	250	360	310	900	1300	3922	195	300	200
SHR25B-16	250	360	310	900	1600	4522	195	300	200
SHR25B-18	250	420	310	900	1800	4922	195	300	200
SHR25B-20	250	420	310	900	2000	5322	195	300	200
SHR25B-22	250	420	310	900	2200	5722	195	300	200
SHR32B-13	320	410	310	1000	1300	4030	195	310	200
SHR32B-16	320	410	310	1000	1600	4630	195	310	200
SHR32B-18	320	451	310	1000	1800	5030	195	310	200
SHR32B-20	320	451	310	1000	2000	5430	195	310	200
SHR32B-22	320	451	310	1000	2200	5830	195	310	200
SHR40B-13	400	480	330	1100	1300	4210	235	320	225
SHR40B-16	400	480	330	1100	1600	4810	235	320	225
SHR40B-18	400	520	330	1100	1800	5210	235	320	225
SHR40B-20	400	520	330	1100	2000	5610	235	320	225
SHR40B-22	400	520	330	1100	2200	6010	235	320	225
SHR50B-13	500	600	380	1505	1300	4715	285	475	300
SHR50B-16	500	600	380	1505	1600	5315	285	475	300
SHR50B-18	500	680	380	1505	1800	5715	285	475	300
SHR50B-20	500	680	380	1505	2000	6115	285	475	300
SHR50B-22	500	680	380	1505	2200	6515	285	475	300
SHR63B-22	630	786	480	1700	2200	6850	355	475	315
SHR63B-25	630	786	480	1700	2500	7450	355	475	315
SHR63B-28	630	791	480	1700	2800	8050	355	475	315
SHR63B-32	630	795	480	1700	3200	8850	355	475	315
SHR71B-20	710	955	590	1900	2000	6730	395	520	450
SHR71B-25	710	955	590	1900	2500	7730	395	520	450
SHR71B-28	710	955	590	1900	2800	8330	395	520	450
SHR71B-32	710	955	590	1900	3200	9130	395	520	450
SHR71B-36	710	1065	590	1900	3600	9930	395	520	450
SHR71B-40	710	1065	590	1900	4000	10730	395	520	450
SHR80B-20	800	1045	590	2070	2000	4920	440	565	460
SHR80B-25	800	1045	590	2070	2500	5920	440	565	460
SHR80B-28	800	1045	590	2070	2800	6520	440	565	460
SHR80B-32	800	1045	590	2070	3200	7320	440	565	460
SHR80B-36	800	1115	590	2070	3600	8120	440	565	460
SHR80B-40	800	1185	590	2070	4000	8920	440	565	460



序号	零件名称	图号/标准号	材质	单位	数量	EC09编码号	EC11编码号	EC16编码号
1	缓冲器	JB/T8110.2-1999	橡胶	件	4	29.11.101	29.11.101	29.11.101
2	深沟球轴承	GB/T276-1994	成品	件	8	21.11.101	21.11.105	21.11.102
3	主动轮	科康提供	ZG40Mn	件	2	11.11.101	11.12.101	11.13.101
4	轴承盖1	科康提供	ZG310-570	件	2	11.11.102	11.12.102	11.13.102
5	内六角圆柱头螺钉	GB/T70.1-2000	8.8	件	16	22.13.103	22.13.103	22.13.103
6	弹簧垫圈	GB/T93-1987	65Mn	件	16	22.12.102	22.12.102	22.12.102
7	轴承盖2	科康提供	ZG310-570	件	2	11.11.103	11.12.103	11.13.103
8	滚轮轴	科康提供	40Cr	件	2	11.11.104	11.12.104	11.13.104
9	轴用弹性挡圈-A型	GB/T894.1-1986	65Mn	件	4	22.16.101	22.16.102	22.16.103
10	从动轮	科康提供	ZG40Mn	件	2	11.11.105	11.12.105	11.13.105
11	调整垫圈	科康提供	Q345B	件	4	11.11.106	11.12.106	11.13.106
12	隔套	科康提供	Q345B	件	4	11.11.107	11.12.107	11.13.107

注:只需提供如上编码号我司即为您配送相应产品



序号	零件名称	图号/标准号	材质	单位	数量	EC20编码号	EC25编码号	EC32编码号	EC50编码号
1	缓冲器	JB/T8110.2-1999	橡胶	件	4	29.11.102	29.11.102	29.11.102	29.11.102
2	六角头螺栓	GB/T5783-2000	4.8	件	16	22.17.101	22.17.101	22.17.102	22.17.102
3	弹簧垫圈	GB/T93-1987	65Mn	件	16	22.12.105	22.12.105	22.12.105	22.12.105
4	封头板	科康提供	Q345B	件	4	11.14.101	11.15.101	11.16.101	11.17.101
5	孔用弹性挡圈-A型	GB/T893.1-1986	65Mn	件	8	22.18.101	22.18.102	22.18.102	22.18.103
6	压盖1	科康提供	Q235B	件	6	11.14.102	11.15.102	11.16.102	11.17.102
7	内六角圆柱头螺钉	GB/T70.1-2000	8.8	件	64	22.13.103	22.13.103	22.13.104	22.13.104
8	弹簧垫圈	GB/T93-1987	65Mn	件	64	22.12.102	22.12.102	22.12.102	22.12.102
9	轴承座	科康提供	ZG310-570	件	8	11.14.103	11.15.103	11.16.103	11.17.103
10	调心滚子轴承	GB/T281-1994	成品	件	8	21.11.301	21.11.302	21.11.302	21.11.303
11	轴承封盖	科康提供	Q235B	件	8	11.14.104	11.15.104	11.16.104	11.17.104
12	螺母座	DIN 6334	成品	件	16	22.19.101	22.19.101	22.19.101	22.19.101
13	主动轮	科康提供	ZG40Mn	件	2	11.14.105	11.15.105	11.16.105	11.17.105
14	从动轮	科康提供	ZG40Mn	件	2	11.14.106	11.15.106	11.16.106	11.17.106
15	压盖2	科康提供	Q235B	件	2	11.14.107	11.15.107	11.16.107	11.17.107